



Maxi-Rigs

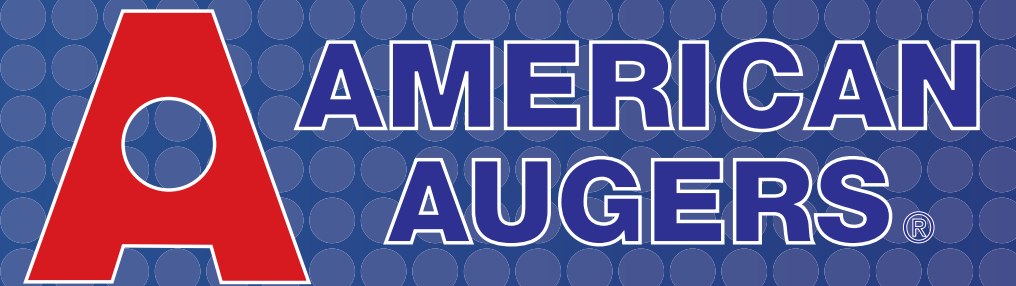
Horizontal Directional Drills



DD-440T
DD-660RS
DD-1100RS

DD-440T

Horizontal Directional Drill



Our Best Selling Maxi!



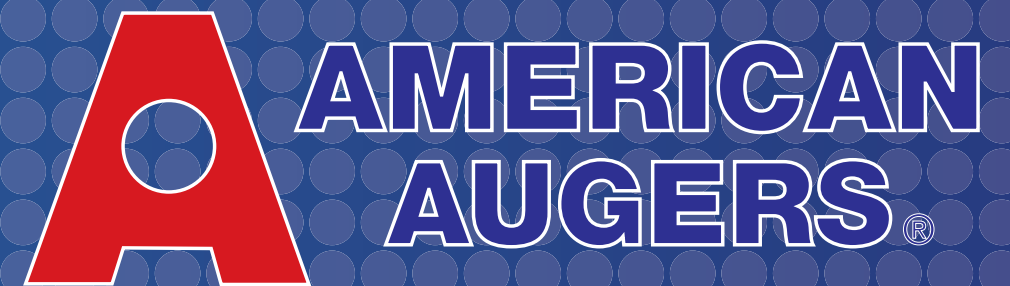
- The only track mounted Directional Drill that offers the highest range of thrust / pullback power
- 60,000 ft. lbs. (81,350 Nm) maximum rotary torque
- Wireline commutator for speedy hookup of the wireline guidance equipment



440,000 lbs. (200 Tonnes) Thrust//Pullback

DD-660RS

Horizontal Directional Drill



The Latest Edition to the Rapid Setup Line of Rigs!



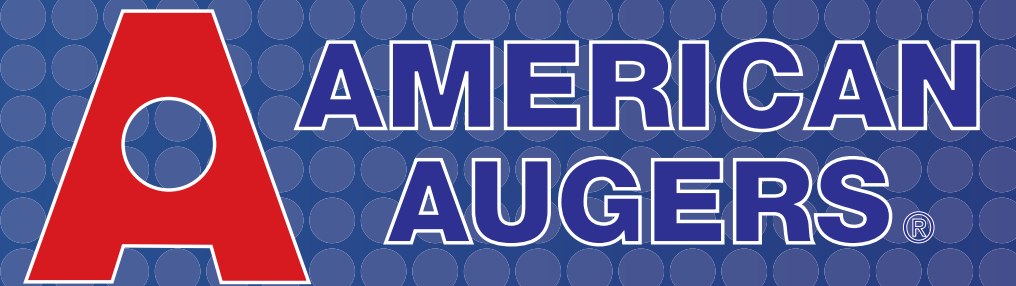
- Pipe loader transports with the rig
- Micro-processor, touch screen controls
- Variable cooling fan for superior noise reduction
- Cummins QSX15 T4 final engine (or Tier 3 depending on country of purchase)



660,000 lbs. (300 Tonnes) Thrust//Pullback

DD-1100RS

Horizontal Directional Drill



World Record Crossing Strength!
2.05 miles (3300 m) of 18 in. (460 mm) Pipe



- The ease of mobility and versatility with maximum power
- 100,000 ft. lbs. (136,000 Nm) maximum rotary torque
- Microprocessor controlled
- Optional Pipeloader

1,100,000 lbs. (500 Tonnes) Thrust//Pullback

Performance Specifications

**Note: All product performance specifications, components, weights, dimensions and other related information are subject to change without notice from the manufacturer.

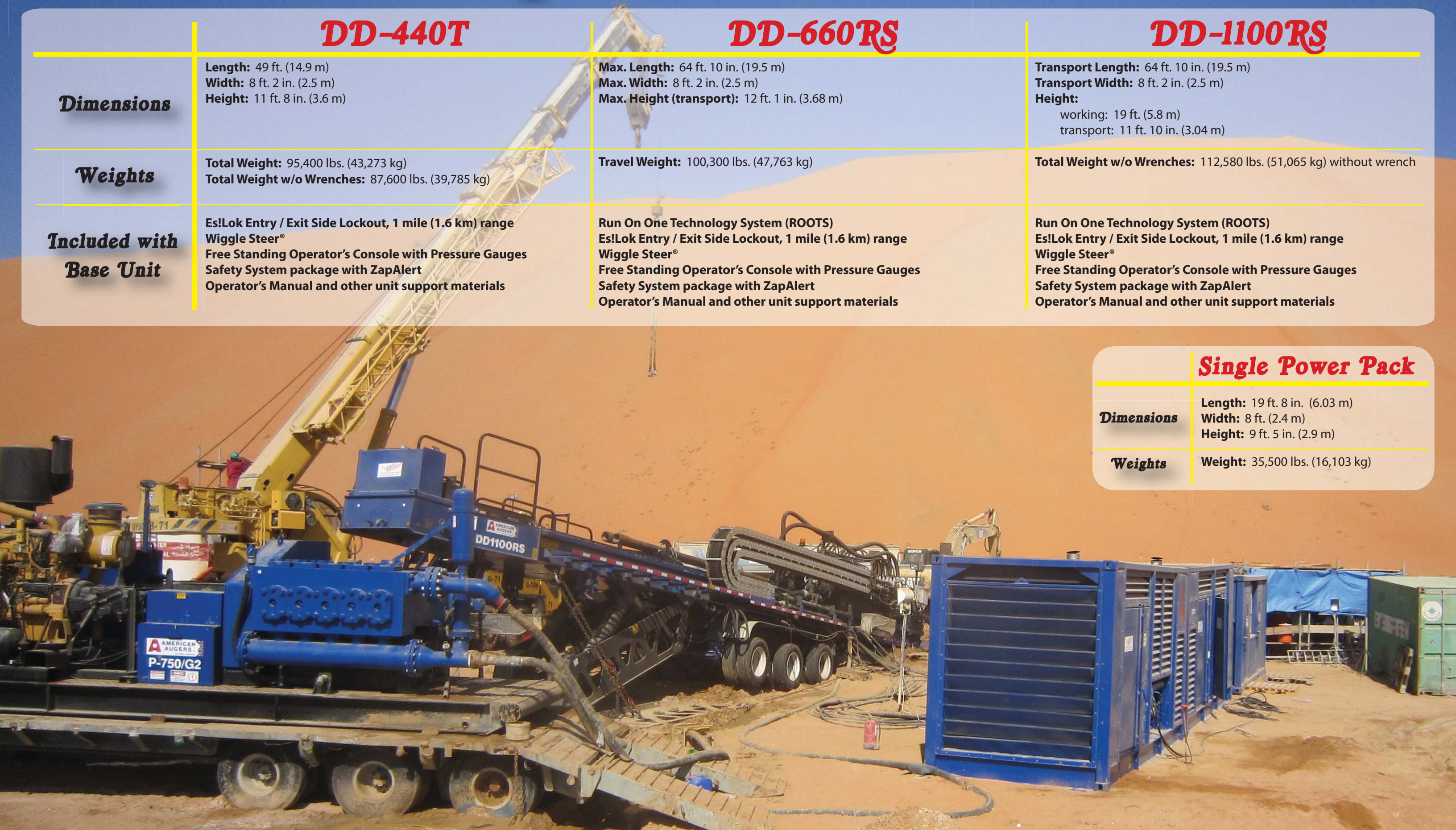
	DD-440T	DD-660RS	DD-1100RS
Power Train	Engine: Cummins QSX15 Tier 4 Final or Tier 3 <i>(depending on country of purchase)</i> Rating: 600 HP (447 kW) Fuel Capacity: 160 U.S. Gallons (605 L) Hydraulic Capacity: 200 U.S. Gallons (757 L) Battery: (2) Deka 908DME, 12 V, 1450 CCA Quiet Pak Technology	Engine: Cummins QSX15 Tier 4 Final or Tier 3 <i>(depending on country of purchase)</i> Rating: 600 HP (447 kW) each Fuel Capacity: 650 U.S. Gallons (2,460 L) Requires 2 Power Packs for optimal performance Hydraulic Filter: High Pressure Filtration and return to 6 micron ABS Advanced Quiet Pak Technology with Variable Cooling	Engine: CAT C-18 Tier 3 diesel or Tier 4i <i>(depending on country of purchase)</i> Rating: 765 HP (570 kW) Fuel Capacity: 650 U.S. Gallons (2,460 L) Requires 2 Power Packs for optimal performance Hydraulic Capacity: 220 U.S. Gallons (833 L) Hydraulic Filter: High Pressure Filtration return to 6 micron ABS Quiet Pak Technology
Carriage System	Carriage System: Rack & Pinion, (2) Pinion Drive with Adjustable Force Limiter Max. Thrust / Pullback: 440,000 lbs. (200 Tonnes) Max. Carriage Speed: 95 ft. (29 m) / minute Carriage Motors: (2) Hyd., 1017 cc, Variable Displacement Carriage Gearbox: (2) Planetary	Carriage System: Rack & Pinion, (4) Pinion Drive with Adjustable Force Limiter Max. Thrust / Pullback: 660,000 lbs. (300 Tonnes) Max. Carriage Speed: 107 ft. (33 m) / minute Carriage Motors: (4) 1017 cc, Variable Displacement Carriage Gearbox: (4) Planetary gearboxes	Carriage System: Rack & Pinion, (6) Pinion Drive with Adjustable Force Limiter Max. Thrust / Pullback: 1,100,000 lbs. (500 Tonnes) Max. Carriage Speed: 101 ft. (30.7 m) / minute Carriage Motors: (6) 1017 cc, Variable Displacement Carriage Gearbox: (6) Planetary
Rotary Drive	Rotary Drive: (3) Pinion and Gear Drive with Infinitely Variable Torque Max. Rotary Torque: 60,000 ft. lbs. (80,000 Nm) Max. Rotary Speed: 95 RPM Rotary Motor: (3) 160 cc, Axial piston, Variable Displacement Rotary Brakes: (2) Spring Applied/Hydraulic Release Fluid Course: 3 in. (76 mm) Max. Flow: Permits up to 650 U.S. Gallons (2,460 L) / minute Max. Pressure: 1,500 psi (103 bar)	Rotary Drive: (4) Pinion and Gear Drive with Infinitely Variable Torque Max. Rotary Torque: 80,000 ft. lbs. (108,460 Nm) @ 0-34 rpm Max. Rotary Speed: 90 RPM Fluid Course: 3 ¾ in. (95.25 mm) for increased downhole hydraulic power Max. Flow: Permits up to 1,000 U.S. Gallons (3,785 L) / minute Max. Pressure: 1,500 psi (103 bar) Hydraulic Pump: (4) Piston Pump, closed loop Auxiliary Pump: (1) Piston Pump, pressure compensated	Rotary Drive: (4) Pinion and Gear Drive with Infinitely Variable Torque Max. Rotary Torque: 100,000 ft. lbs. (136,000 Nm) @ 0-37 rpm Max. Rotary Speed: 85 RPM Rotary Motor: (4) 160 cc Axial Piston / Variable Displacement Rotary Brakes: (4) Spring Applied/Hydraulic Release Fluid Course: 4 in. (102 mm) for increased downhole hyd. power Max. Flow: Permits up to 1,000 U.S. Gallons (3,785 L) / minute Max. Pressure: 1,500 psi (103 bar) Hydraulic Pump: (2) Piston pump, closed loop Auxiliary Pump: (1) Piston Pump, pressure compensated Slip Spindle: 8 5⁄8 in. (219 mm) pin
Drill Rig, Wrench & Misc.	Wrench Design: Full Wrench travel Clamp/Grip Range: 2 ¾ in. - 10 ¾ in. (70-273 mm) Max. Breakout Torque: 154,000 ft. lbs. (209,460 Nm) Max. Makeup Torque: 101,700 ft. lbs. (138,312 Nm) Wrench Assembly Motor: (2) Hydraulic LSHT, 12 CIR Wrench Assembly Brake: (1) Spring Applied / Hydraulic release Planetary Gearbox: (2) SGL Hydraulic Wrench Cylinder: (6) 8 in. Bore x 3 in. stroke Drill Angle: 10° to 18° Drill Pipe Length: Range II, 30 ft (9.1 m)	Wrench Design: Full Wrench travel Clamp/Grip Range: 3 ½ in. - 10 ½ in. (89-267 mm) O.D. Max. Breakout Torque: 220,000 ft. lbs. (298,280 Nm) Max. Makeup Torque: 100,183 ft. lbs. (138,252 Nm) Processor Controls: Sauer Danfoss micro processor controls w/ touch screen Drill Angle: 10° to 18° Drill Pipe: Range II, 30 ft (9.1 m) Pipe Capacity: 4 Optional Pipe Loader	Wrench Design Full Wrench travel Clamp/Grip Range: 3 ½ in. - 10 ½ in. (89-267 mm) O.D. Max. Breakout Torque: 230,000 ft. lbs. (312,000 Nm) Max. Makeup Torque: 100,183 ft. lbs. (138,252 Nm) Wrench Assembly Motor: (2) Hydraulic LSHT, 12.5 CIR Wrench Assembly Brake: (1) Spring Applied / Hydraulic release Drill Angle: 10° to 18° Drill Pipe Length: Range II, 34 ft. (10.4 m) Optional Pipe Loader

Performance Specifications

**Note: All product performance specifications, components, weights, dimensions and other related information are subject to change without notice from the manufacturer.

	DD-440T	DD-660RS	DD-1100RS
Dimensions	Length: 49 ft. (14.9 m) Width: 8 ft. 2 in. (2.5 m) Height: 11 ft. 8 in. (3.6 m)	Max. Length: 64 ft. 10 in. (19.5 m) Max. Width: 8 ft. 2 in. (2.5 m) Max. Height (transport): 12 ft. 1 in. (3.68 m)	Transport Length: 64 ft. 10 in. (19.5 m) Transport Width: 8 ft. 2 in. (2.5 m) Height: working: 19 ft. (5.8 m) transport: 11 ft. 10 in. (3.04 m)
Weights	Total Weight: 95,400 lbs. (43,273 kg) Total Weight w/o Wrenches: 87,600 lbs. (39,785 kg)	Travel Weight: 100,300 lbs. (47,763 kg)	Total Weight w/o Wrenches: 112,580 lbs. (51,065 kg) without wrench
Included with Base Unit	Es!Lok Entry / Exit Side Lockout, 1 mile (1.6 km) range Wiggle Steer® Free Standing Operator's Console with Pressure Gauges Safety System package with ZapAlert Operator's Manual and other unit support materials	Run On One Technology System (ROOTS) Es!Lok Entry / Exit Side Lockout, 1 mile (1.6 km) range Wiggle Steer® Free Standing Operator's Console with Pressure Gauges Safety System package with ZapAlert Operator's Manual and other unit support materials	Run On One Technology System (ROOTS) Es!Lok Entry / Exit Side Lockout, 1 mile (1.6 km) range Wiggle Steer® Free Standing Operator's Console with Pressure Gauges Safety System package with ZapAlert Operator's Manual and other unit support materials

	Single Power Pack
Dimensions	Length: 19 ft. 8 in. (6.03 m) Width: 8 ft. (2.4 m) Height: 9 ft. 5 in. (2.9 m)
Weights	Weight: 35,500 lbs. (16,103 kg)



Premium Options



8' x 12'

ISO-Style Driller's Cabin

Rugged, construction-grade reliability! Designed with ISO corners for easy loading and unloading. 12-gauge corrugated siding with thermo pane windows, ergonomically configured interior 6-way adjustable tension chair, climate controls and abundant work surfaces. Can be ordered in 50 Hz or 60 Hz.



8' x 20'

ISO-Style Power Pack Trailer

Custom made for your American Augers power units. This trailer features ISO corners to pin your units directly to the trailer. Trailer dimensions are 51 ft. x 96 in. (15.5 x 2.4 m)



QUIET-PAK

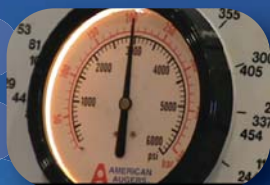
Power unit sound deadening enclosure. Made up of removable panels with 2" of acoustical absorbing material keeping dB's under control. 3 lockable doors for easy access.

Secondary Power Pack

The most important option you can purchase for your drill!

ROOTS - Run On One Technology System

The drill can operate on one or both units. This allows you to do maintenance on one unit without experiencing any down time.



Certified Pullback Test

A Guarantee of exactly what YOUR machine can pull.



Pipe Loader

Keep your crew safe!

- Stages 4 rods
- Connected to the thrust frame with pins for easy attachment and removal
- Can handle different sized drill pipe
- Processor controlled extension cylinders for accurate and adjustable rod positioning

12/14

American Augers is not responsible for customers' product modifications shown in any photographic images

AMERICAN AUGERS

135 US Route 42 • PO BOX 814 • West Salem, OH 44287 • Phone 800.324.4930 • Fax 419.869.7425 • americanaugers.com